

Motorcalibration ASI

Kilowatt app



Download the kilowatt app in the google play store :

<https://play.google.com/store/apps/details?id=bike.kilowatt.Staging&hl=en>

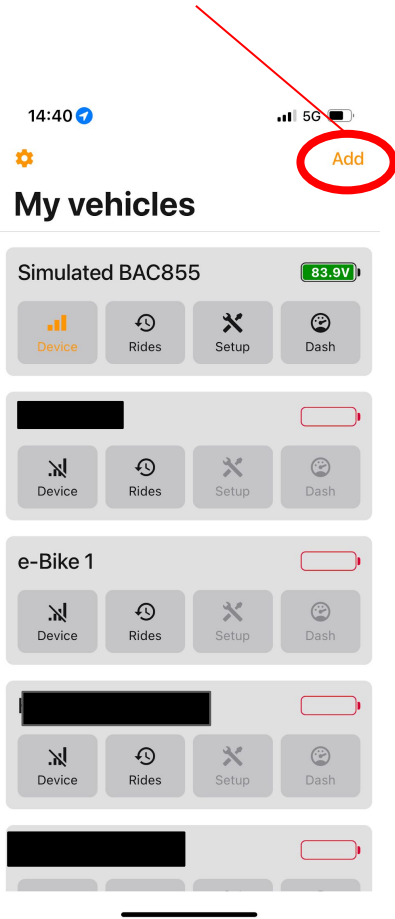
This application allows you to perform the **Motor Configuration**. This function enables the use of **any type of motor** with the BAC controllers.

Key Functionality

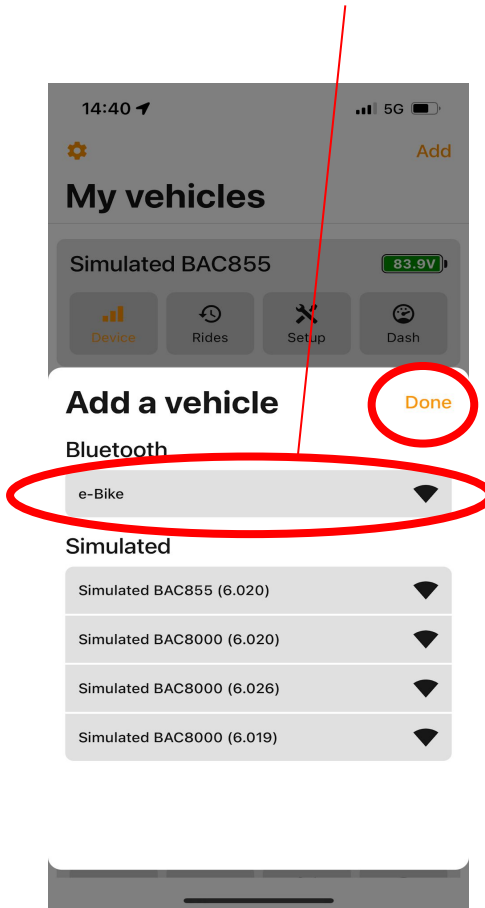
The 'Motor Configuration' feature ensures **optimal synchronization** between the connected motor and the BAC controller, guaranteeing **universal compatibility**.

BASIC MOTOR CALIBRATION

click on Add

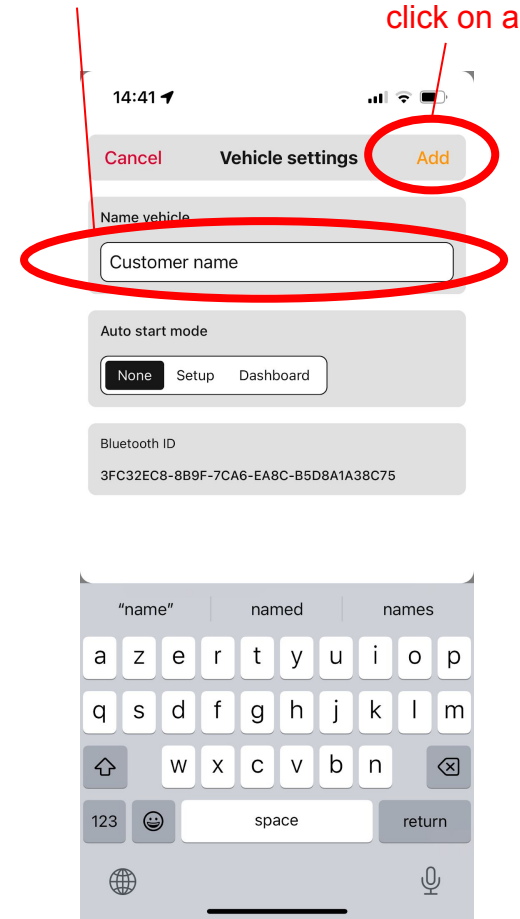


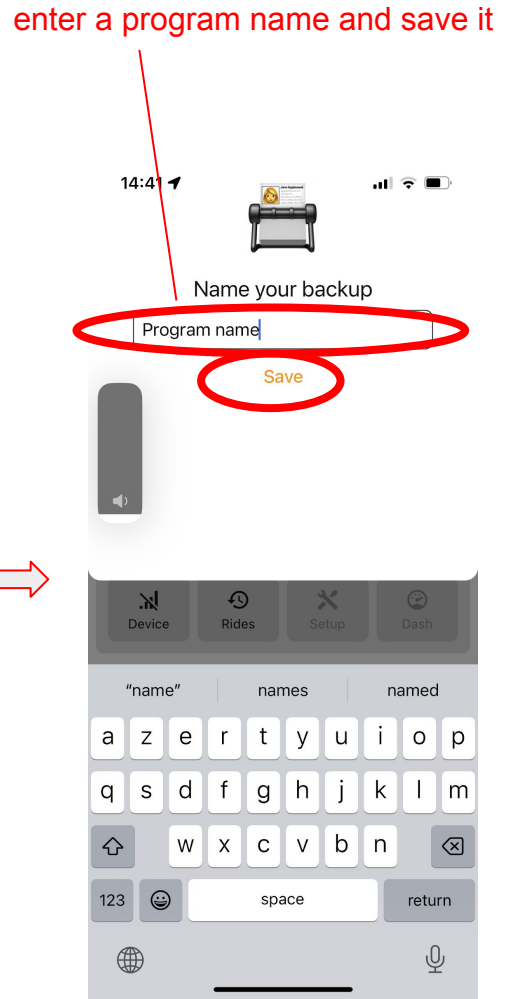
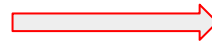
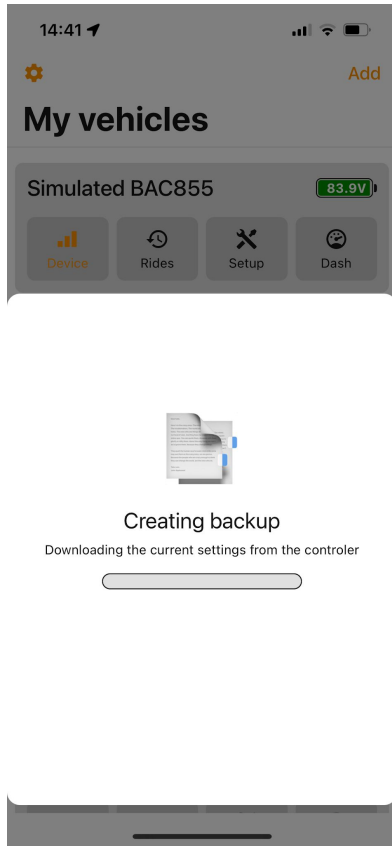
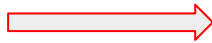
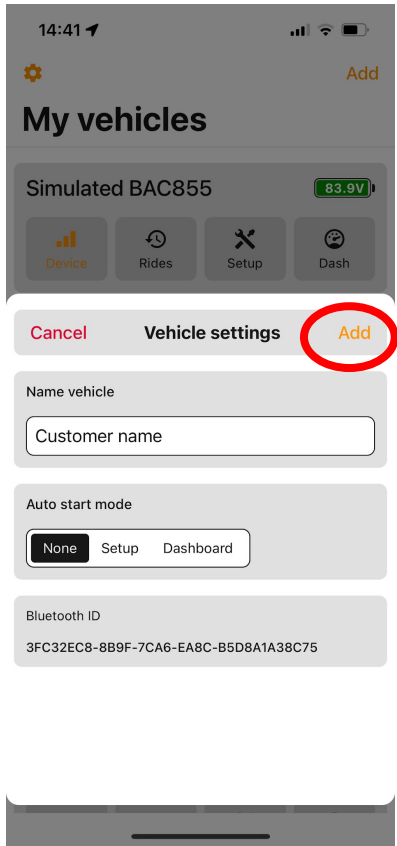
select your device (controller)



enter a name for the device

click on add





Is the Max motorphase current, this depends on the motor type and controller type.

BAC355 : between 30-50A

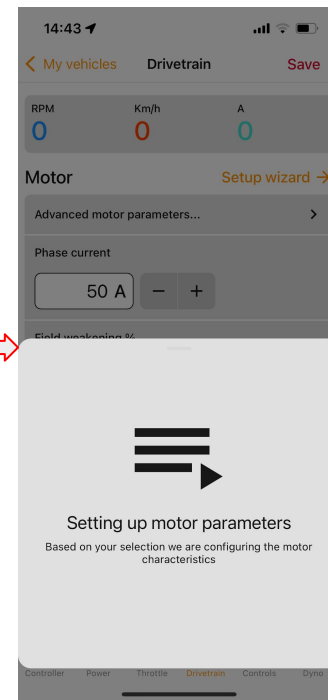
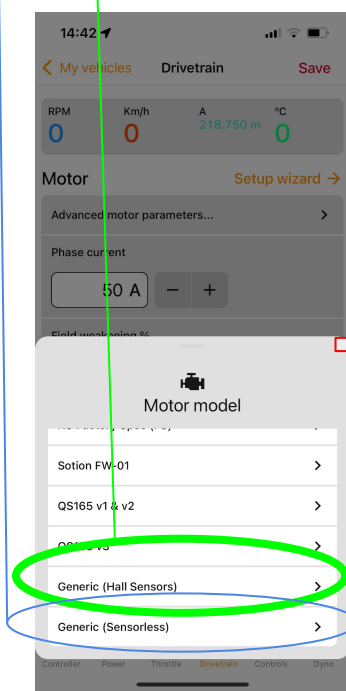
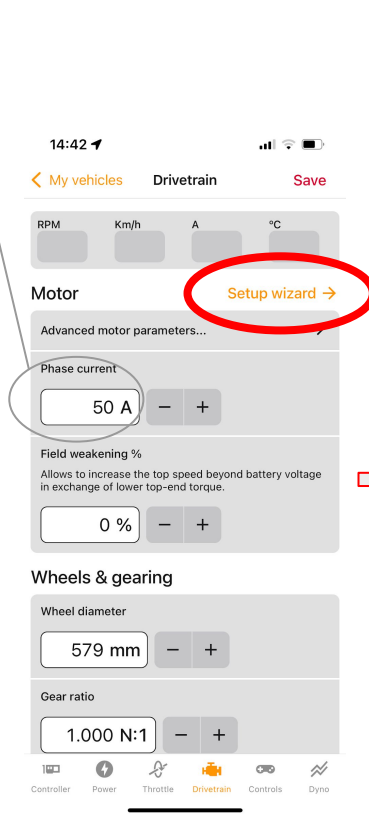
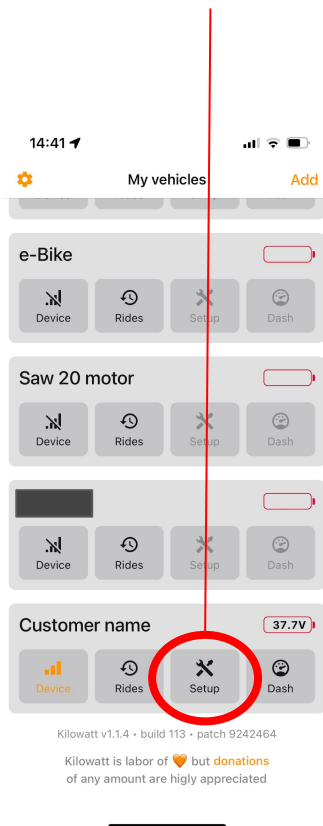
BAC855 : between 50-85A

More A = More torque during the start, but to high current can burn the motor/motor connector

select "sensorless" or "hall sensors"

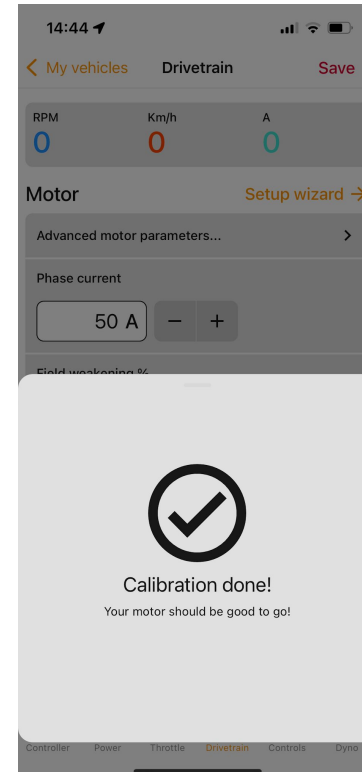
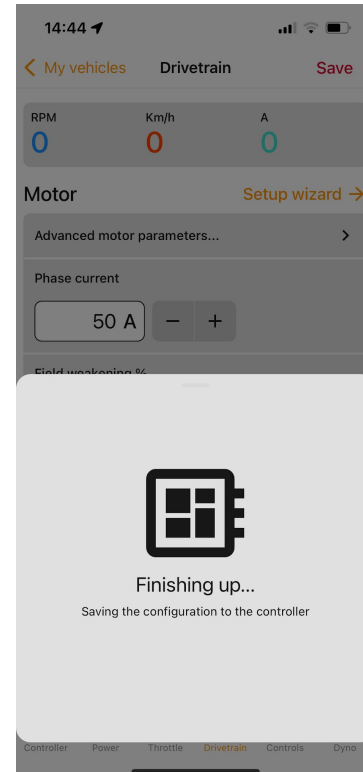
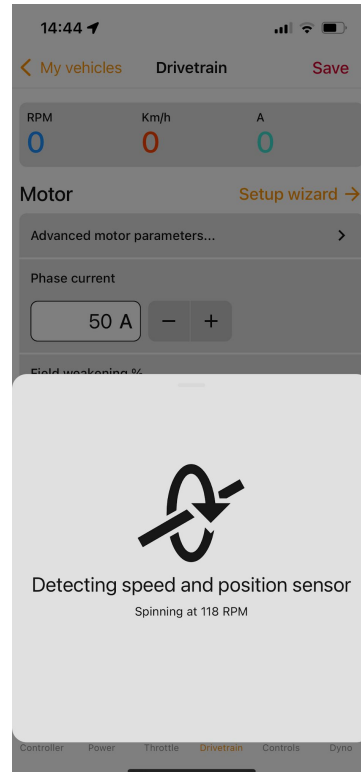
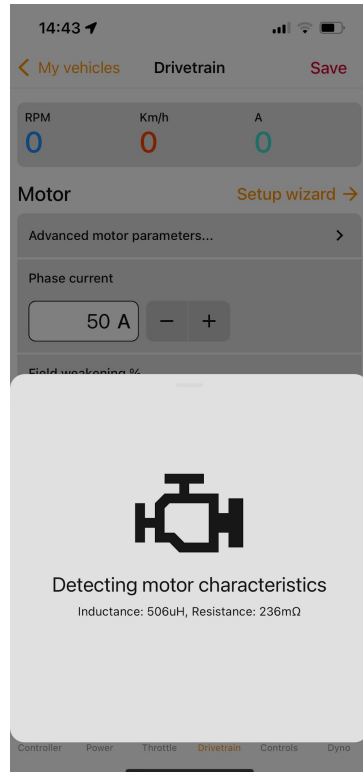
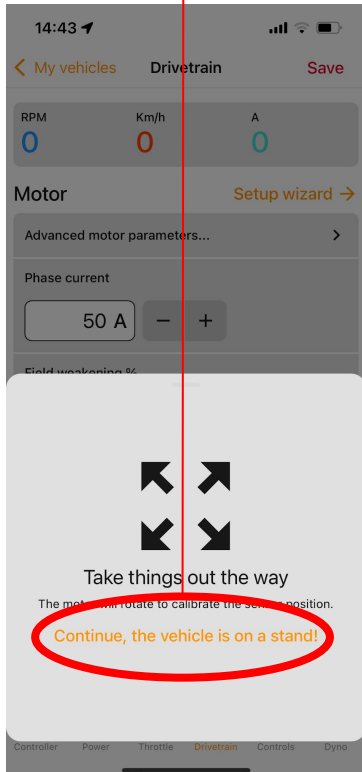
Sensorless: no motor noise, start from stand still can be jerky.
No hall sensors need. Recommended with PAS sensor only or when the hall sensors are broken.

hall sensors= smoother start from stand still, but bit more noise during the ride. recommended if you use a throttle



! WARNING !

Motor must be lifted up = in the air.
The motor will run automatically!



click on safe to save the motor configuration

